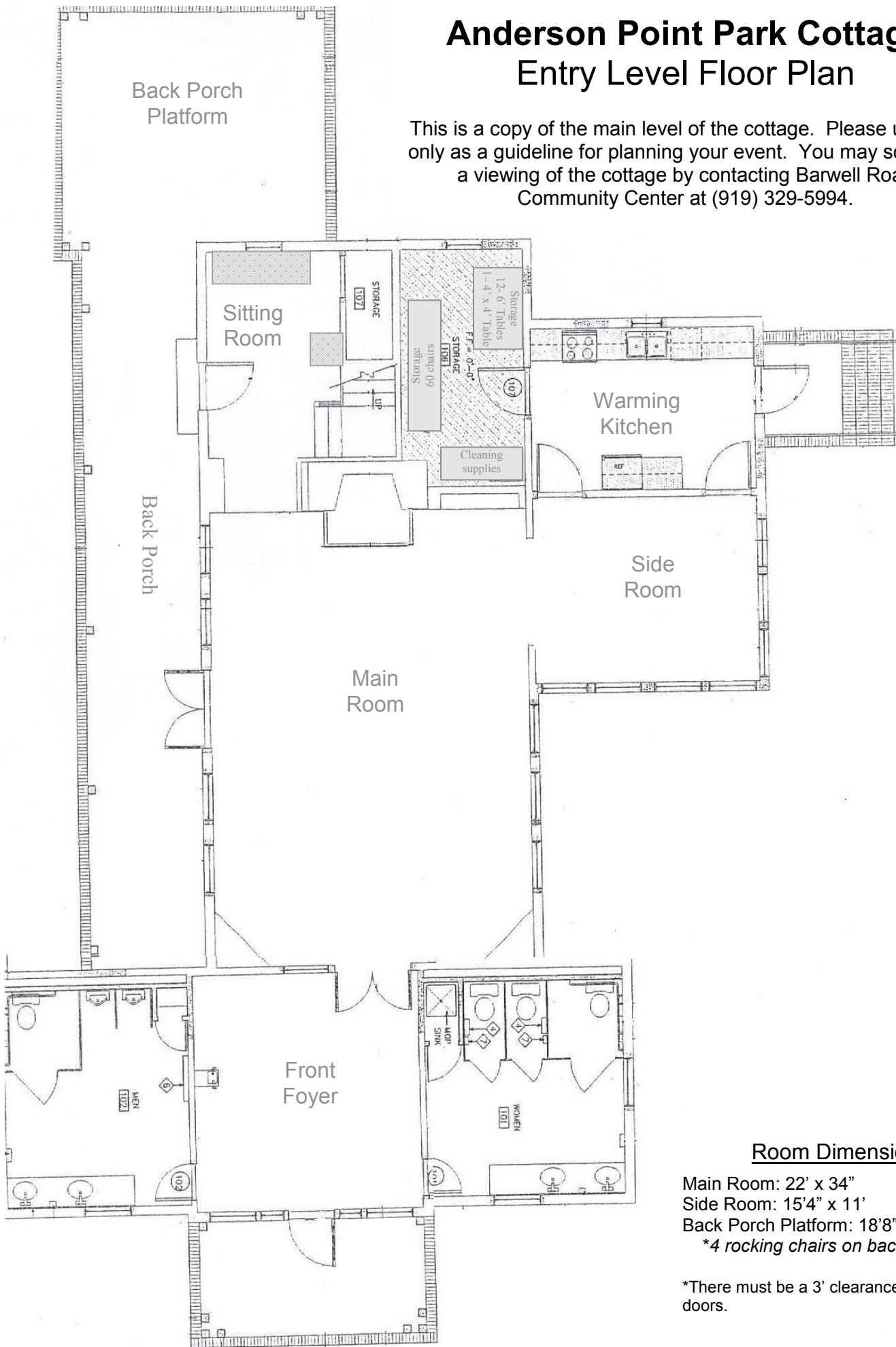


Anderson Point Park Cottage Entry Level Floor Plan

This is a copy of the main level of the cottage. Please use this only as a guideline for planning your event. You may schedule a viewing of the cottage by contacting Barwell Road Community Center at (919) 329-5994.



Room Dimensions

Main Room: 22' x 34"

Side Room: 15'4" x 11'

Back Porch Platform: 18'8" x 15'6 3/4"

*4 rocking chairs on back porch.

*There must be a 3' clearance around all doors.

Anderson Point Park Cottage Upstairs Level Floor Plan

This is a copy of the upstairs level of the cottage. Please use this only as a guideline for planning your event.



Room Dimensions

Bridal Room: 15'4" x 11'

*There must be a 3' clearance around all doors.