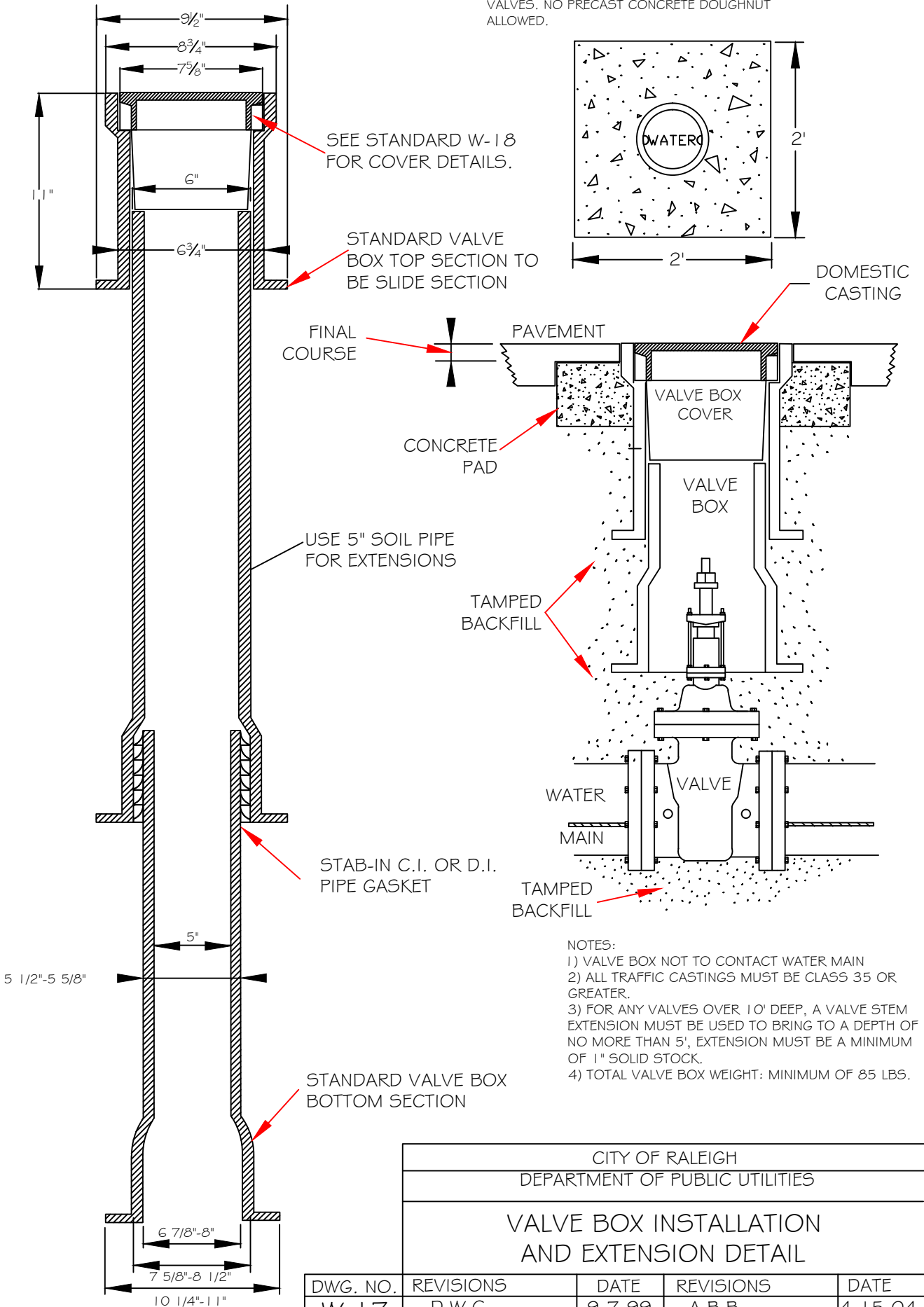


APPROVED METHOD FOR EXTENSION OF VALVE BOX

NOTE: 2'x 2'x 6" CONCRETE PAD REQUIRED ON ALL VALVES. NO PRECAST CONCRETE DOUGHNUT ALLOWED.



SEE STANDARD W-18 FOR COVER DETAILS.

STANDARD VALVE BOX TOP SECTION TO BE SLIDE SECTION

USE 5" SOIL PIPE FOR EXTENSIONS

STAB-IN C.I. OR D.I. PIPE GASKET

STANDARD VALVE BOX BOTTOM SECTION

- NOTES:
- 1) VALVE BOX NOT TO CONTACT WATER MAIN
 - 2) ALL TRAFFIC CASTINGS MUST BE CLASS 35 OR GREATER.
 - 3) FOR ANY VALVES OVER 10' DEEP, A VALVE STEM EXTENSION MUST BE USED TO BRING TO A DEPTH OF NO MORE THAN 5', EXTENSION MUST BE A MINIMUM OF 1" SOLID STOCK.
 - 4) TOTAL VALVE BOX WEIGHT: MINIMUM OF 85 LBS.

CITY OF RALEIGH				
DEPARTMENT OF PUBLIC UTILITIES				
VALVE BOX INSTALLATION AND EXTENSION DETAIL				
DWG. NO.	REVISIONS	DATE	REVISIONS	DATE
W-17	D.W.C.	9-7-99	A.B.B.	4-15-04
	RRH	3-31-00	DHL	8-16-07