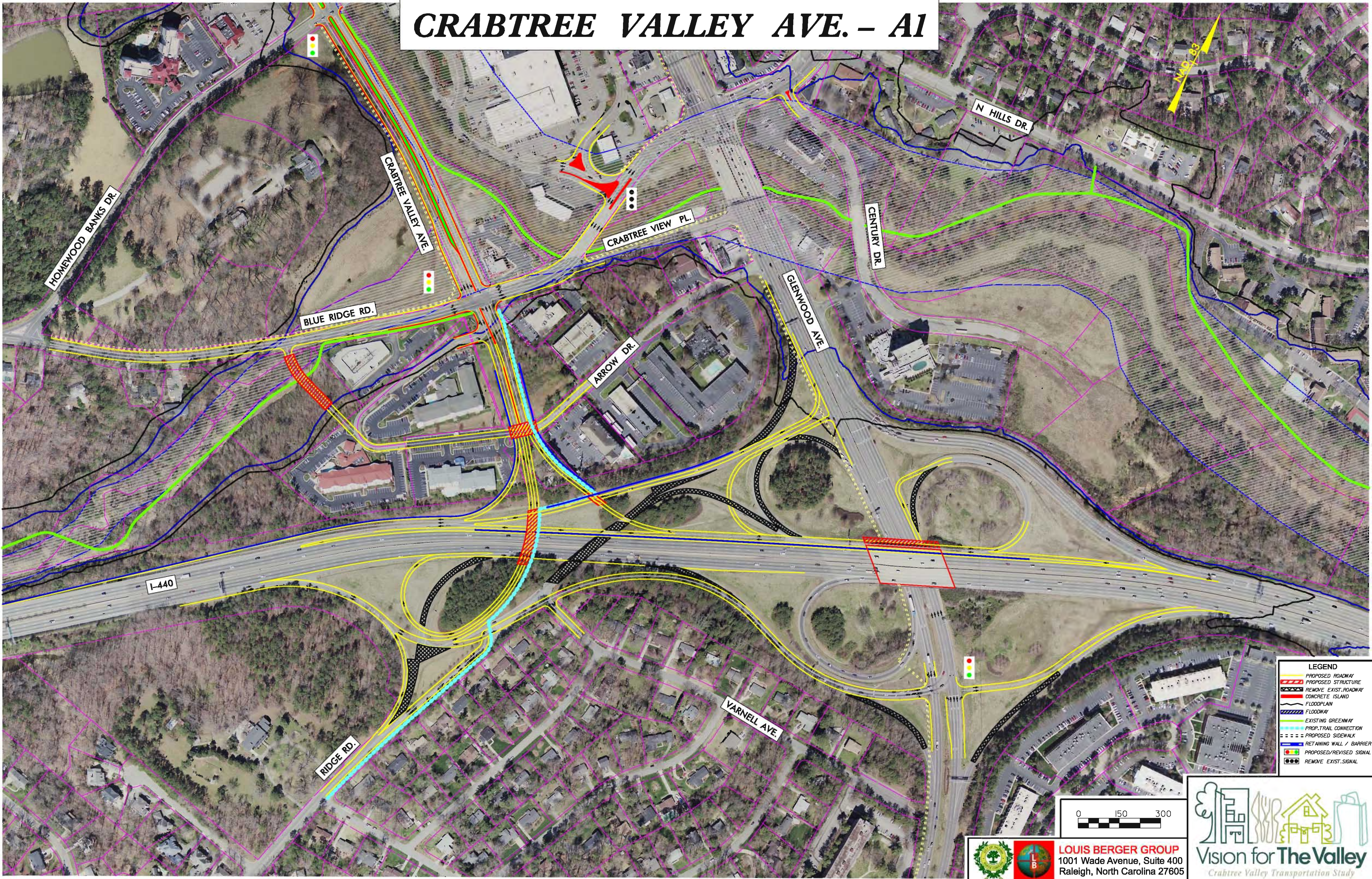
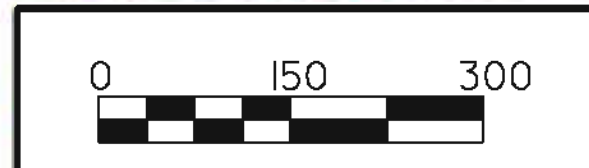

Appendix K: Design Alternative Maps

CRABTREE VALLEY AVE. – A1



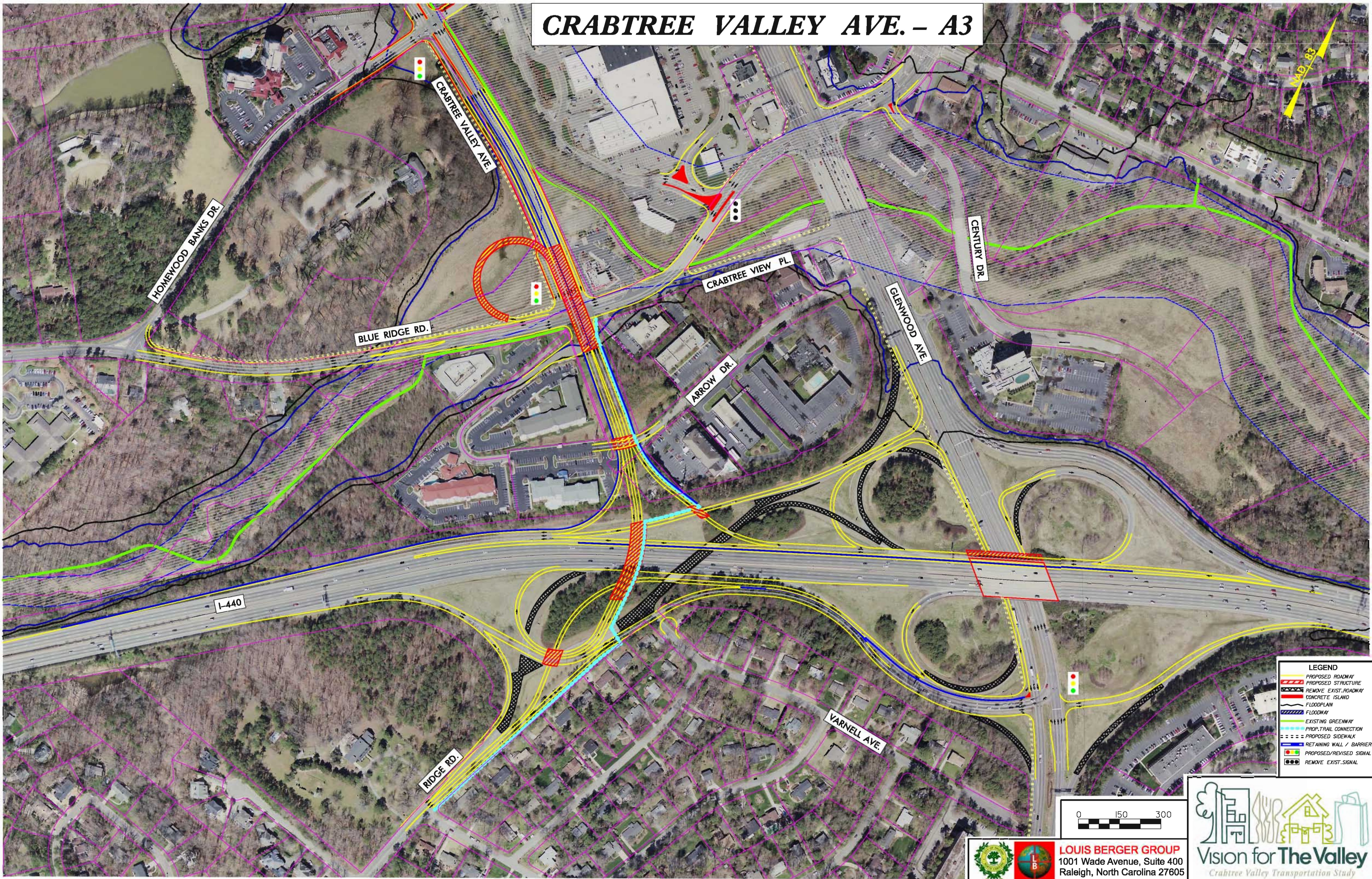
- LEGEND**
- PROPOSED ROADWAY
 - PROPOSED STRUCTURE
 - REMOVE EXIST. ROADWAY
 - CONCRETE ISLAND
 - FLOODPLAIN
 - FLOODWAY
 - EXISTING GREENWAY
 - PROP. TRAIL CONNECTION
 - PROPOSED SIDEWALK
 - RETAINING WALL / BARRIER
 - PROPOSED/REVISED SIGNAL
 - REMOVE EXIST. SIGNAL



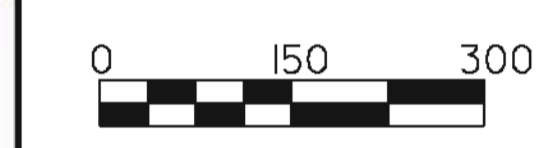
LOUIS BERGER GROUP
1001 Wade Avenue, Suite 400
Raleigh, North Carolina 27605

Vision for The Valley
Crabtree Valley Transportation Study

CRABTREE VALLEY AVE. – A3



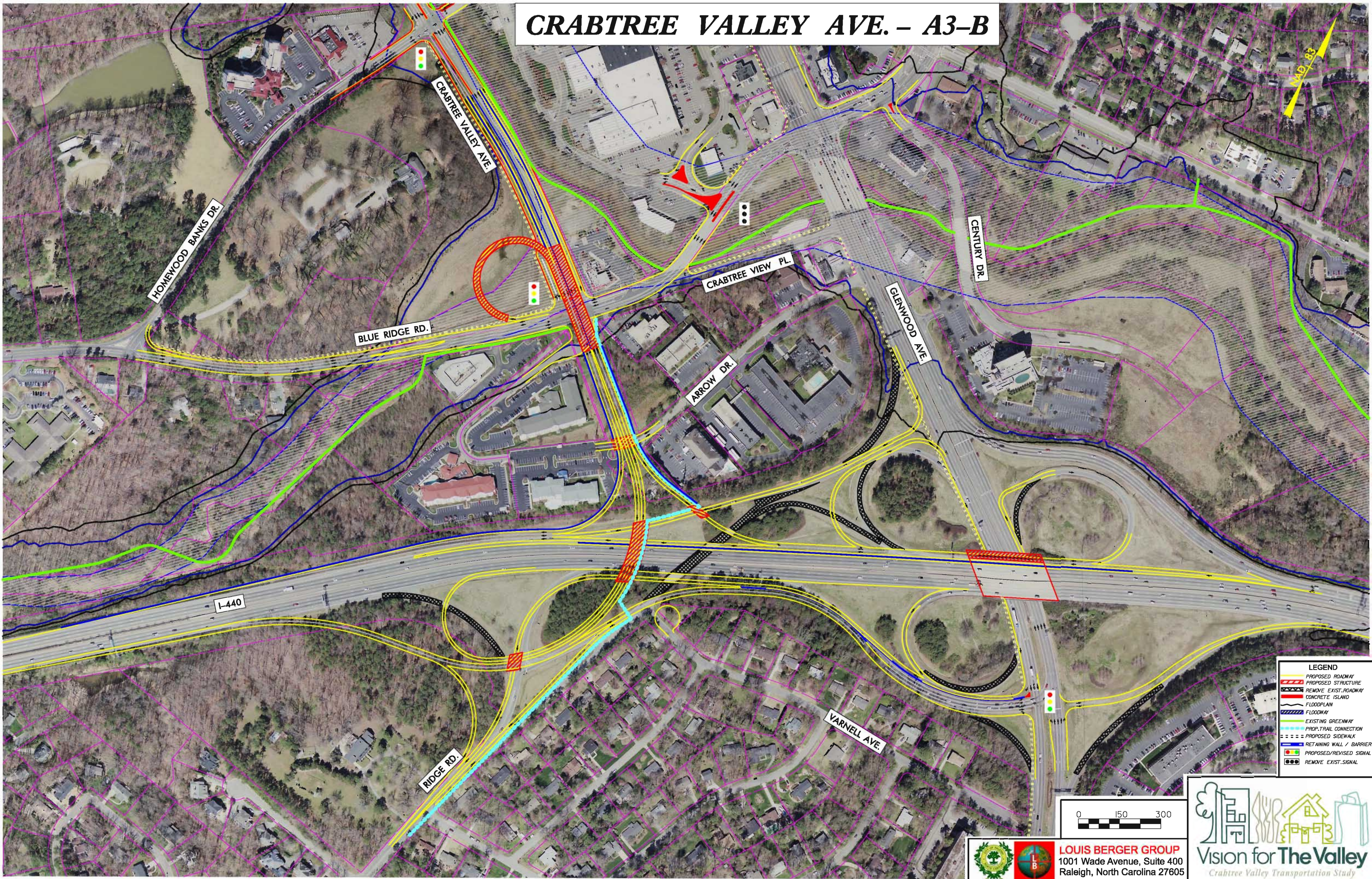
- LEGEND**
- PROPOSED ROADWAY
 - PROPOSED STRUCTURE
 - REMOVE EXIST. ROADWAY
 - CONCRETE ISLAND
 - FLOODPLAIN
 - FLOODWAY
 - EXISTING GREENWAY
 - PROP. TRAIL CONNECTION
 - PROPOSED SIDEWALK
 - RETAINING WALL / BARRIER
 - PROPOSED/REVISED SIGNAL
 - REMOVE EXIST. SIGNAL



LOUIS BERGER GROUP
1001 Wade Avenue, Suite 400
Raleigh, North Carolina 27605



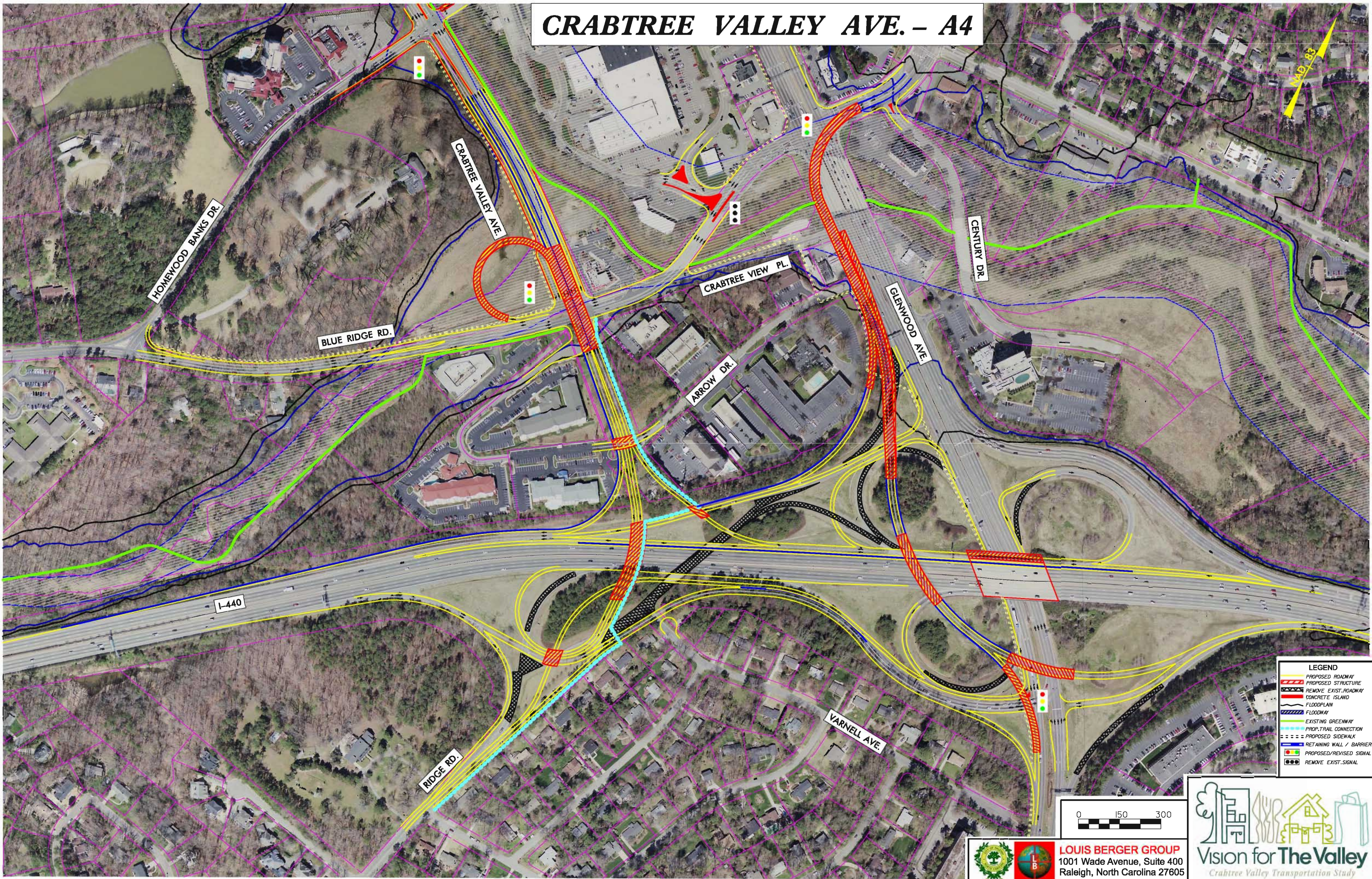
CRABTREE VALLEY AVE. - A3-B



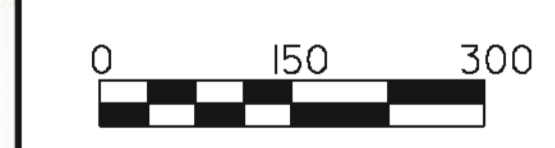
LOUIS BERGER GROUP
1001 Wade Avenue, Suite 400
Raleigh, North Carolina 27605



CRABTREE VALLEY AVE. – A4



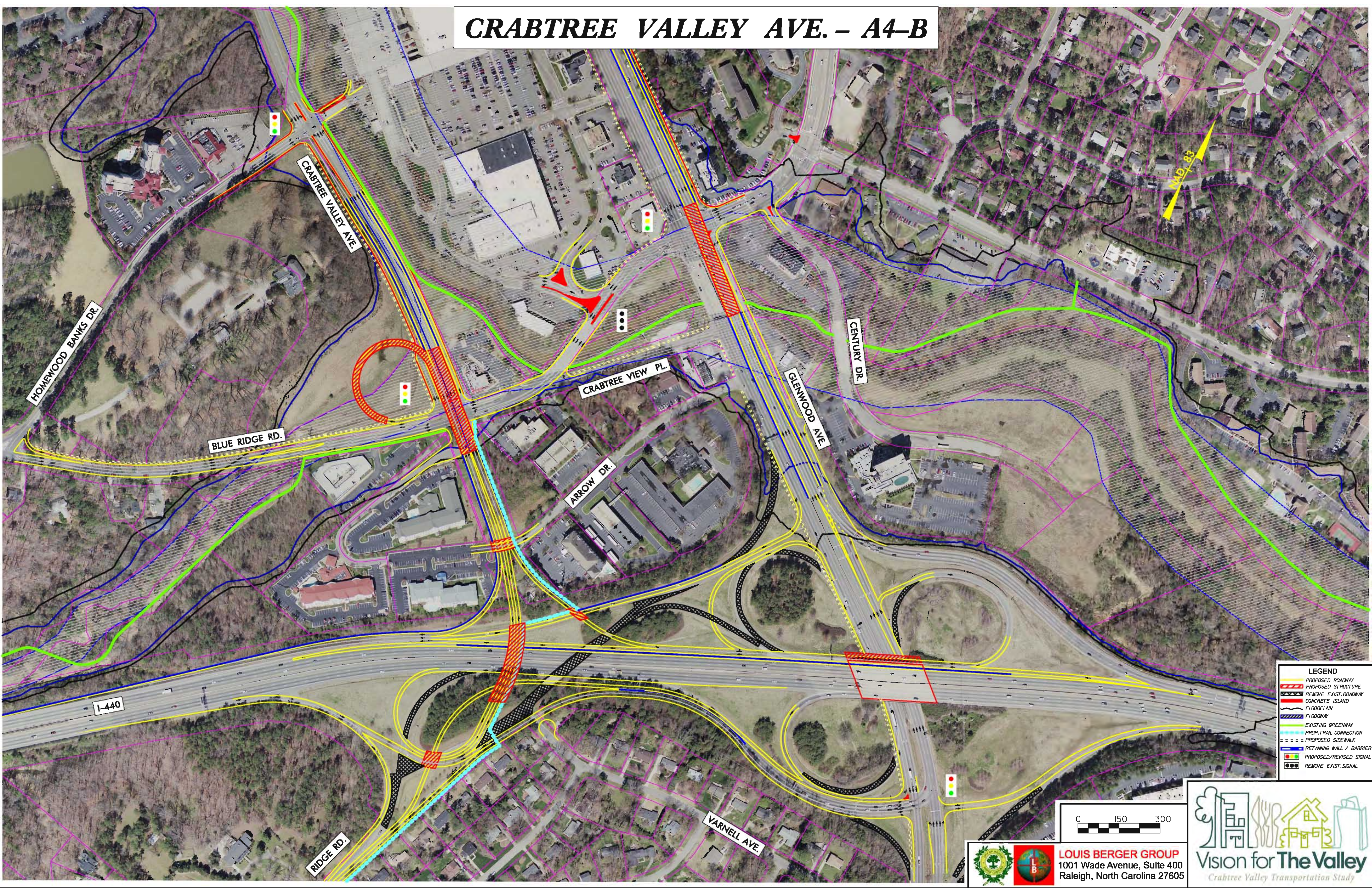
- LEGEND**
- PROPOSED ROADWAY
 - PROPOSED STRUCTURE
 - REMOVE EXIST. ROADWAY
 - CONCRETE ISLAND
 - FLOODPLAIN
 - FLOODWAY
 - EXISTING GREENWAY
 - PROP. TRAIL CONNECTION
 - PROPOSED SIDEWALK
 - RETAINING WALL / BARRIER
 - PROPOSED/REVISED SIGNAL
 - REMOVE EXIST. SIGNAL



LOUIS BERGER GROUP
1001 Wade Avenue, Suite 400
Raleigh, North Carolina 27605



CRABTREE VALLEY AVE. – A4-B



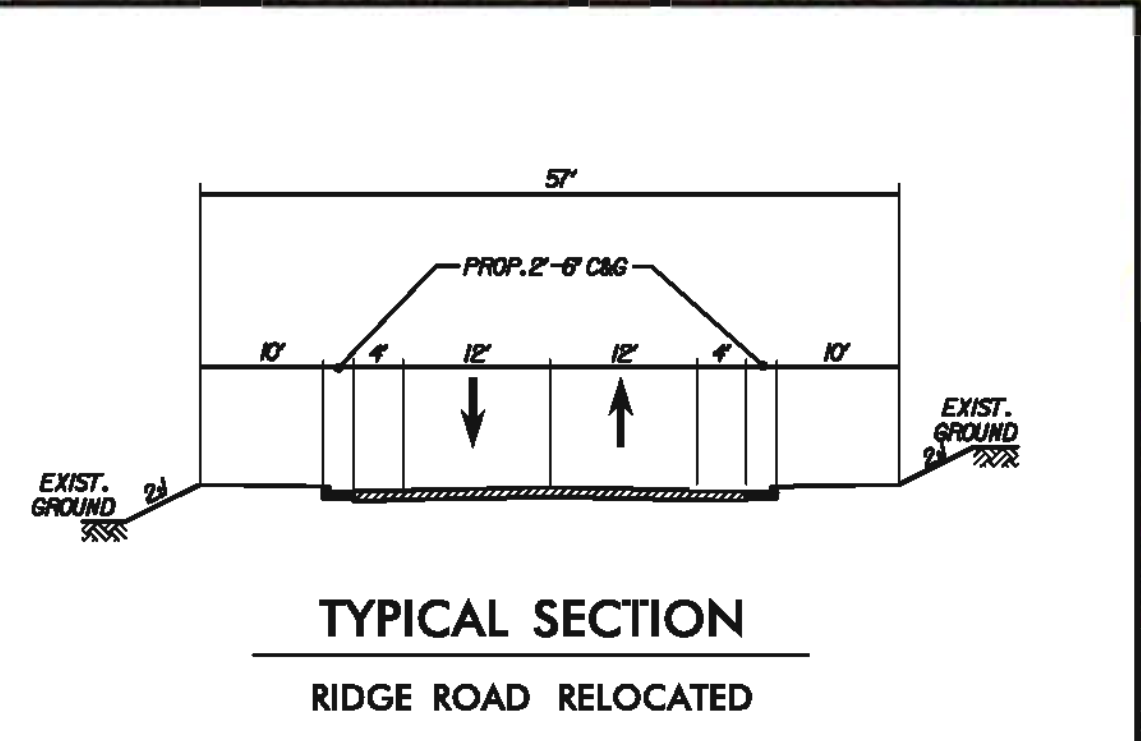
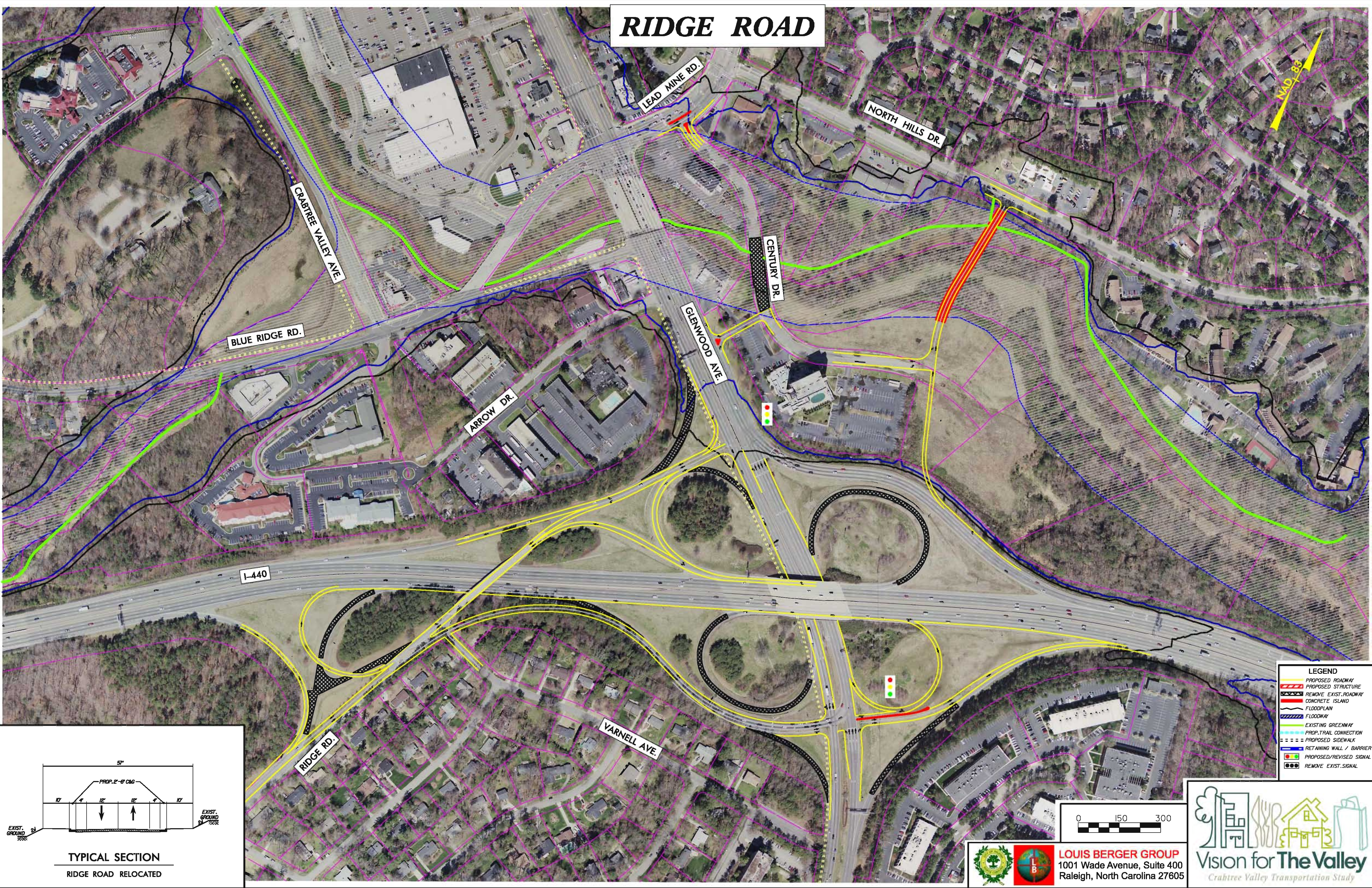
- LEGEND**
- PROPOSED ROADWAY
 - PROPOSED STRUCTURE
 - REMOVE EXIST. ROADWAY
 - CONCRETE ISLAND
 - FLOODPLAIN
 - FLOODWAY
 - EXISTING GREENWAY
 - PROP. TRAIL CONNECTION
 - PROPOSED SIDEWALK
 - RETAINING WALL / BARRIER
 - PROPOSED/REVISED SIGNAL
 - REMOVE EXIST. SIGNAL



LOUIS BERGER GROUP
1001 Wade Avenue, Suite 400
Raleigh, North Carolina 27605



RIDGE ROAD



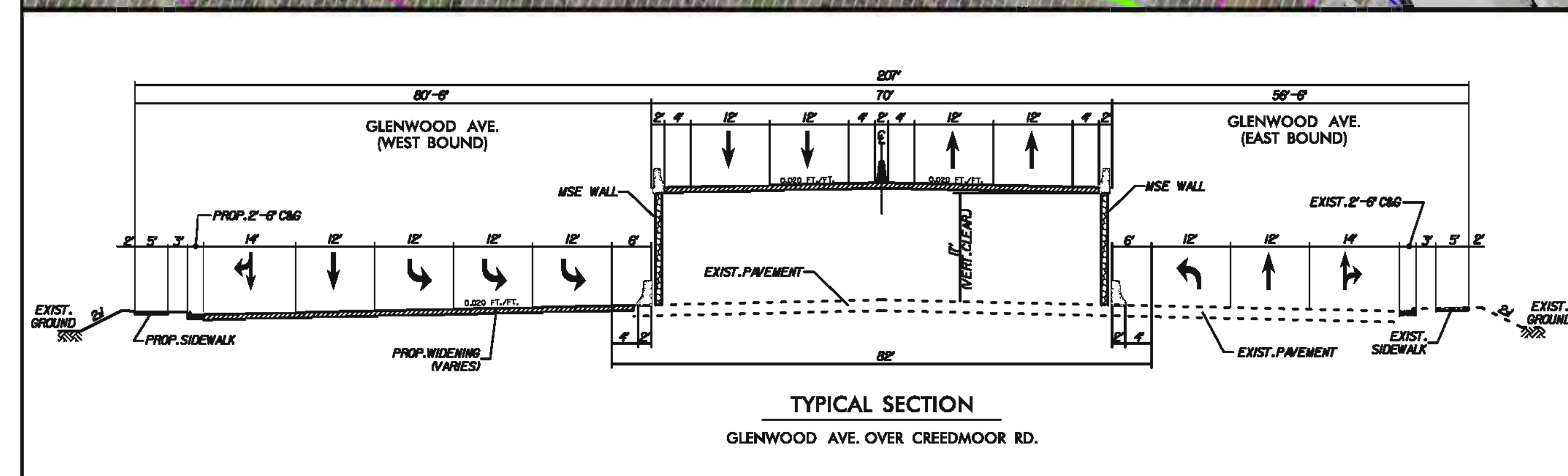
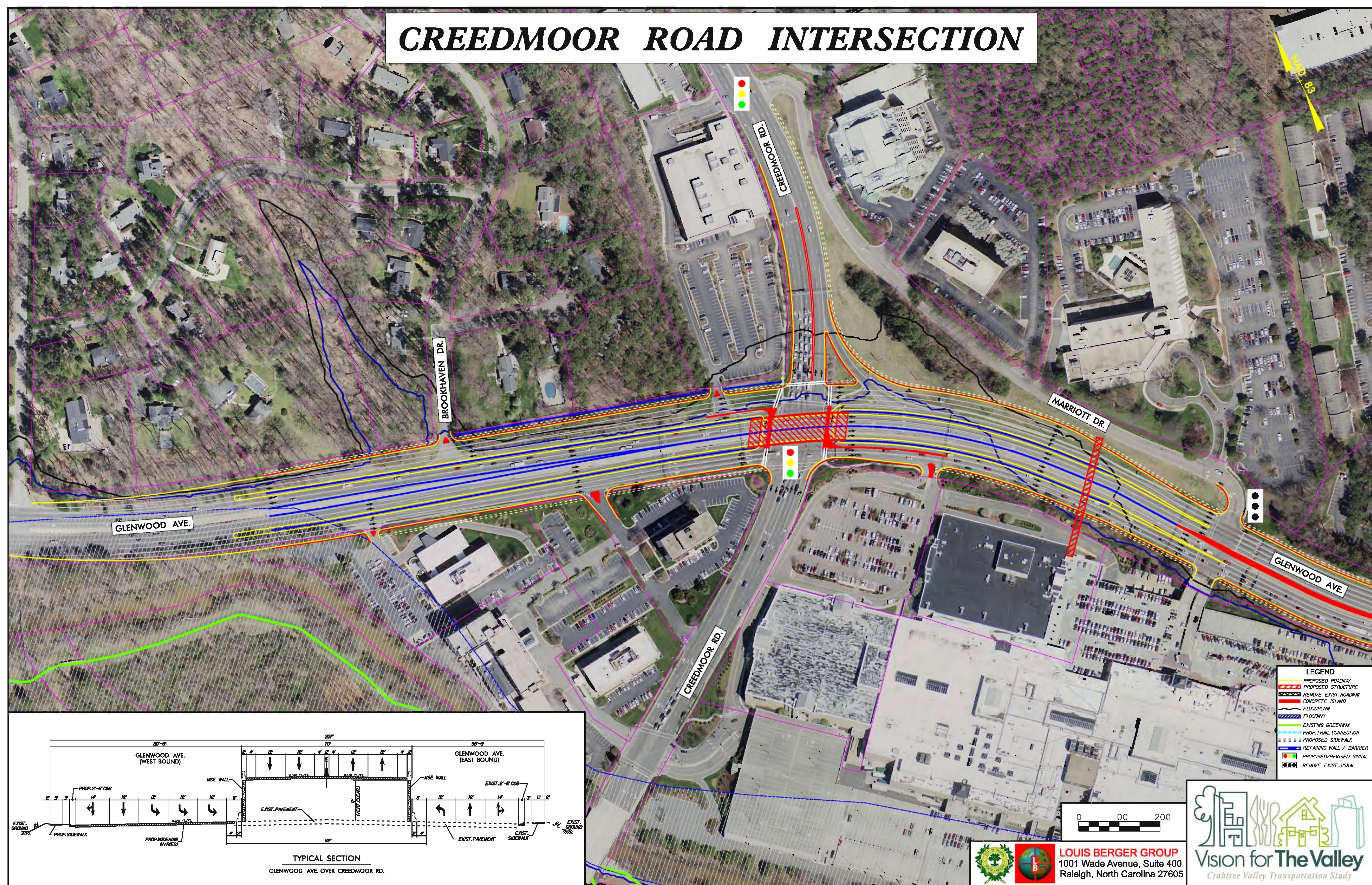
- LEGEND**
- PROPOSED ROADWAY
 - PROPOSED STRUCTURE
 - REMOVE EXIST. ROADWAY
 - CONCRETE ISLAND
 - FLOODPLAIN
 - EXISTING GREENWAY
 - PROP. TRAIL CONNECTION
 - PROPOSED SIDEWALK
 - RETAINING WALL / BARRIER
 - PROPOSED/REVISED SIGNAL
 - REMOVE EXIST. SIGNAL



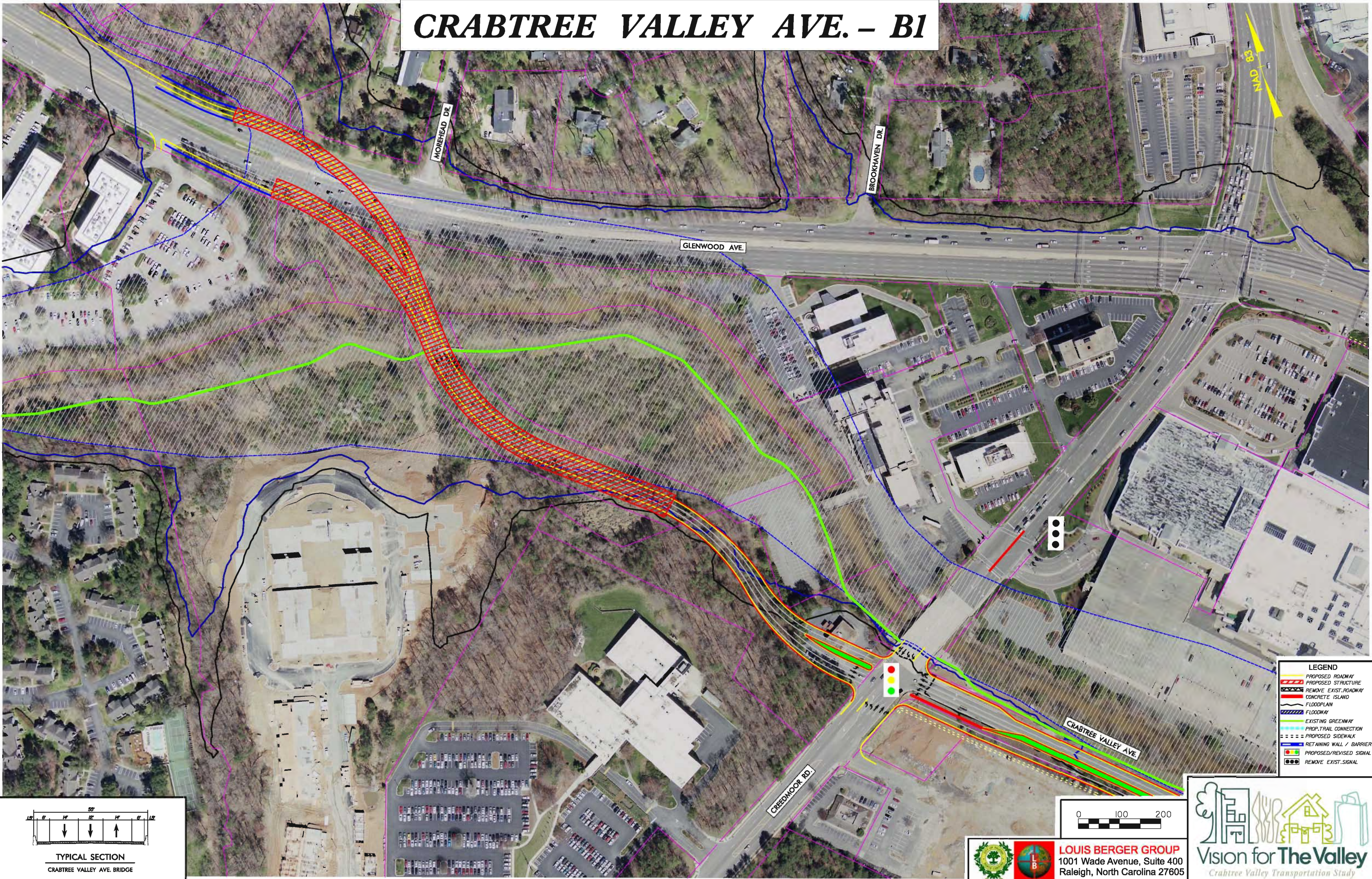
LOUIS BERGER GROUP
1001 Wade Avenue, Suite 400
Raleigh, North Carolina 27605

Vision for The Valley
Crahtree Valley Transportation Study

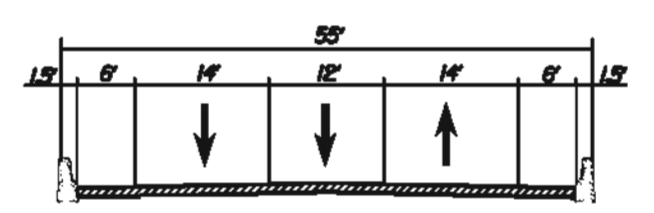
CREEDMOOR ROAD INTERSECTION



CRABTREE VALLEY AVE. – B1



- LEGEND**
- PROPOSED ROADWAY
 - PROPOSED STRUCTURE
 - REMOVE EXIST. ROADWAY
 - CONCRETE ISLAND
 - FLOODPLAIN
 - FLOODWAY
 - EXISTING GREENWAY
 - PROP. TRAIL CONNECTION
 - PROPOSED SIDEWALK
 - RETAINING WALL / BARRIER
 - PROPOSED/REVISED SIGNAL
 - REMOVE EXIST. SIGNAL



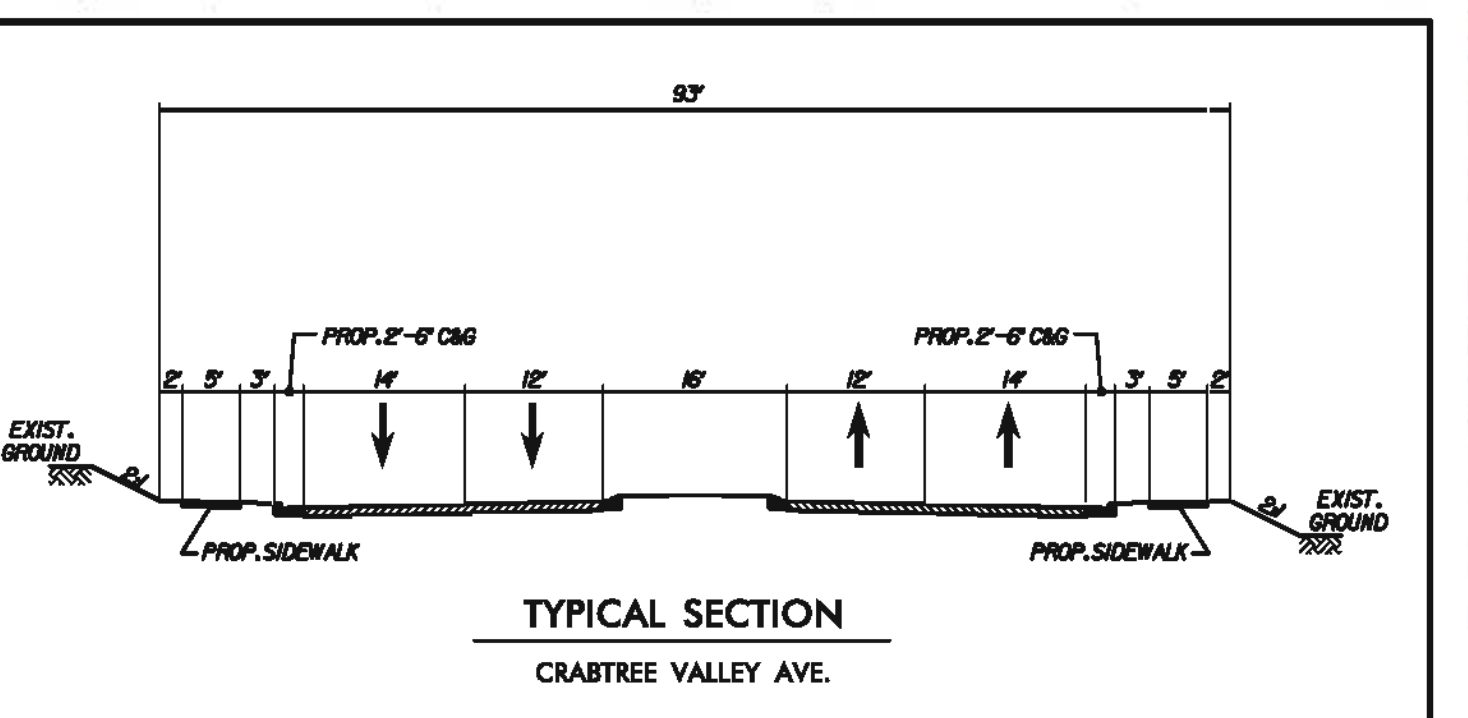
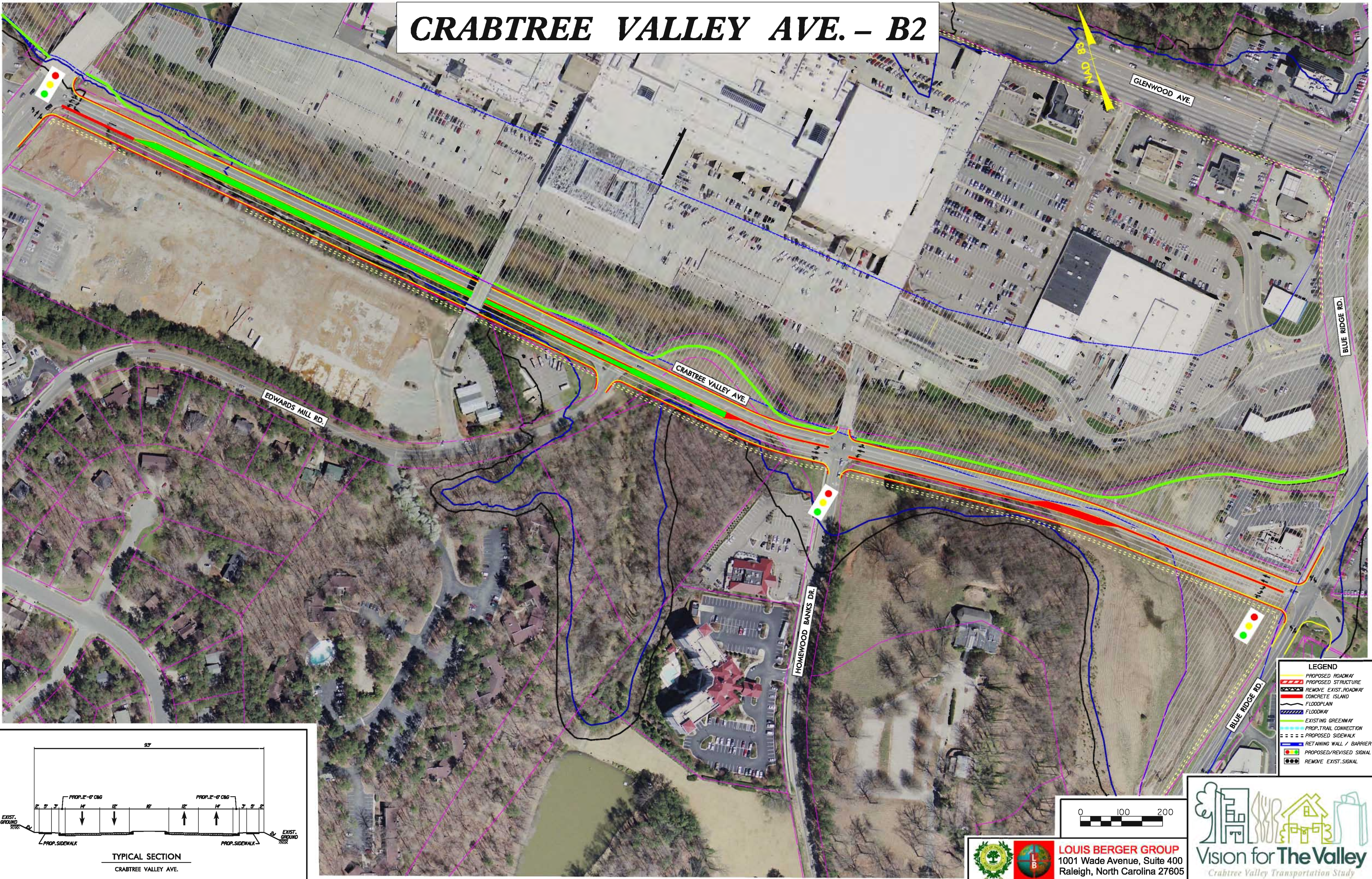
TYPICAL SECTION
CRABTREE VALLEY AVE. BRIDGE



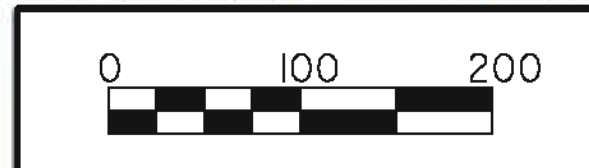
LOUIS BERGER GROUP
1001 Wade Avenue, Suite 400
Raleigh, North Carolina 27605



CRABTREE VALLEY AVE. – B2



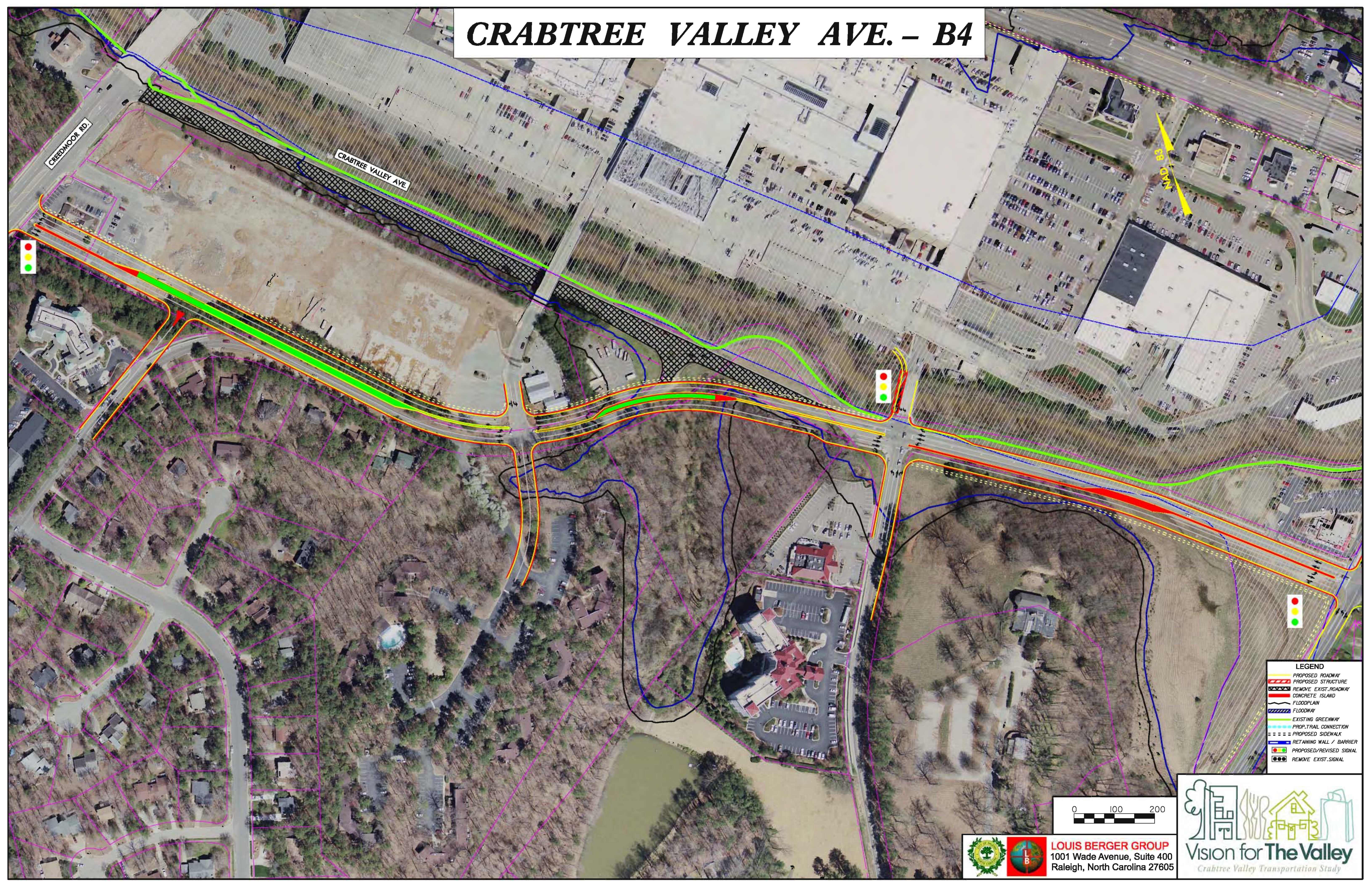
- LEGEND**
- PROPOSED ROADWAY
 - PROPOSED STRUCTURE
 - REMOVE EXIST. ROADWAY
 - CONCRETE ISLAND
 - FLOODPLAIN
 - EXISTING GREENWAY
 - PROP. TRAIL CONNECTION
 - PROPOSED SIDEWALK
 - RETAINING WALL / BARRIER
 - PROPOSED/REVISED SIGNAL
 - REMOVE EXIST. SIGNAL



LOUIS BERGER GROUP
1001 Wade Avenue, Suite 400
Raleigh, North Carolina 27605



CRABTREE VALLEY AVE. – B4



- LEGEND**
- PROPOSED ROADWAY
 - PROPOSED STRUCTURE
 - REMOVE EXIST. ROADWAY
 - CONCRETE ISLAND
 - FLOODPLAIN
 - FLOODWAY
 - EXISTING GREENWAY
 - PROP. TRAIL CONNECTION
 - PROPOSED SIDEWALK
 - RETAINING WALL / BARRIER
 - PROPOSED/REVISED SIGNAL
 - REMOVE EXIST. SIGNAL

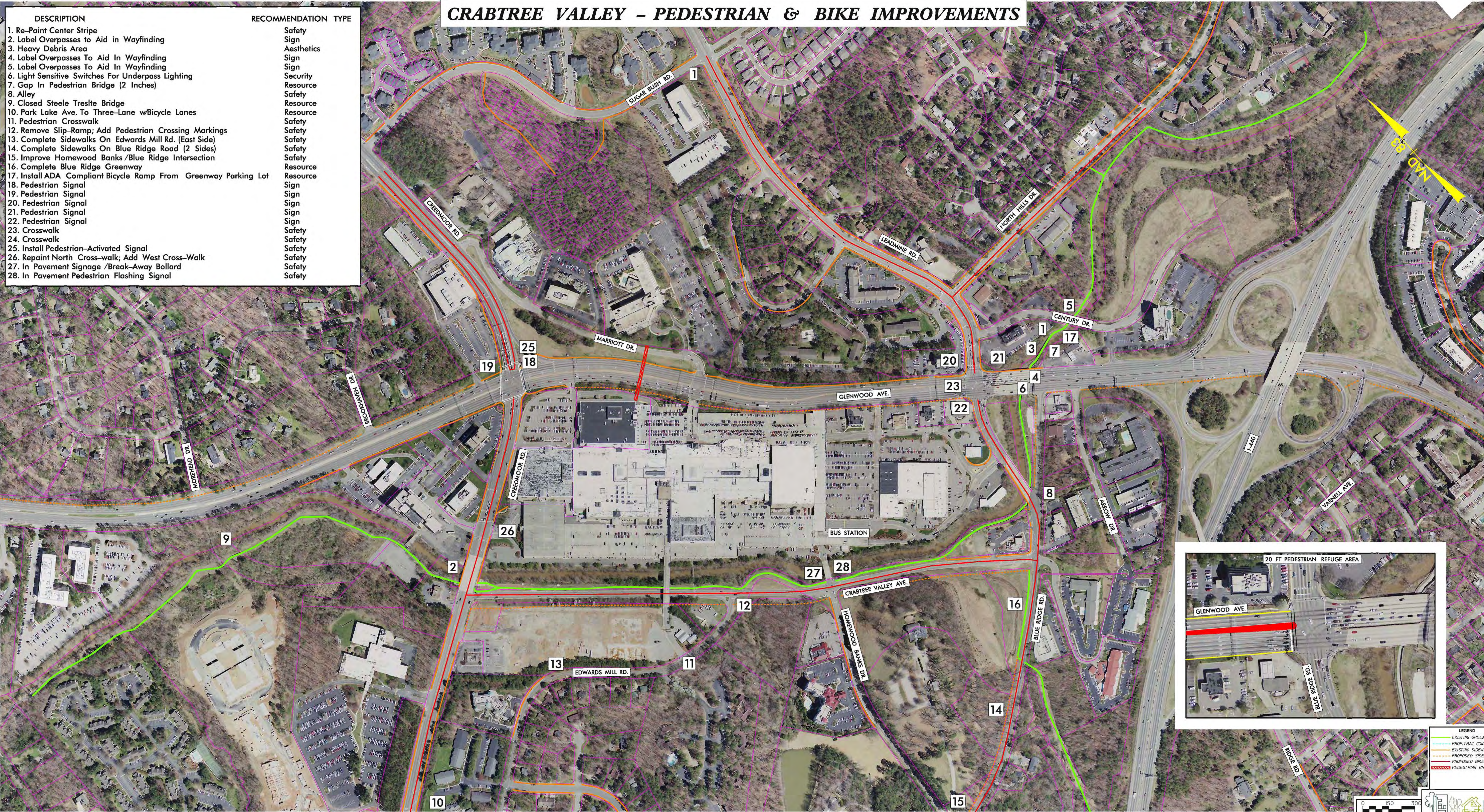


LOUIS BERGER GROUP
1001 Wade Avenue, Suite 400
Raleigh, North Carolina 27605



CRABTREE VALLEY – PEDESTRIAN & BIKE IMPROVEMENTS

DESCRIPTION	RECOMMENDATION TYPE
1. Re-Paint Center Stripe	Safety
2. Label Overpasses to Aid in Wayfinding	Sign
3. Heavy Debris Area	Aesthetics
4. Label Overpasses To Aid In Wayfinding	Sign
5. Label Overpasses To Aid In Wayfinding	Sign
6. Light Sensitive Switches For Underpass Lighting	Security
7. Gap In Pedestrian Bridge (2 Inches)	Resource
8. Alley	Safety
9. Closed Steele Trestle Bridge	Resource
10. Park Lake Ave. To Three-Lane w/Bicycle Lanes	Resource
11. Pedestrian Crosswalk	Safety
12. Remove Slip-Ramp; Add Pedestrian Crossing Markings	Safety
13. Complete Sidewalks On Edwards Mill Rd. (East Side)	Safety
14. Complete Sidewalks On Blue Ridge Road (2 Sides)	Safety
15. Improve Homewood Banks /Blue Ridge Intersection	Safety
16. Complete Blue Ridge Greenway	Resource
17. Install ADA Compliant Bicycle Ramp From Greenway Parking Lot	Resource
18. Pedestrian Signal	Sign
19. Pedestrian Signal	Sign
20. Pedestrian Signal	Sign
21. Pedestrian Signal	Sign
22. Pedestrian Signal	Sign
23. Crosswalk	Safety
24. Crosswalk	Safety
25. Install Pedestrian-Activated Signal	Safety
26. Repaint North Cross-walk; Add West Cross-Walk	Safety
27. In Pavement Signage /Break-Away Bollard	Safety
28. In Pavement Pedestrian Flashing Signal	Safety



CRABTREE VALLEY – EXISTING TRANSIT MAP



LEGEND
EXISTING TRANSIT ROUTE



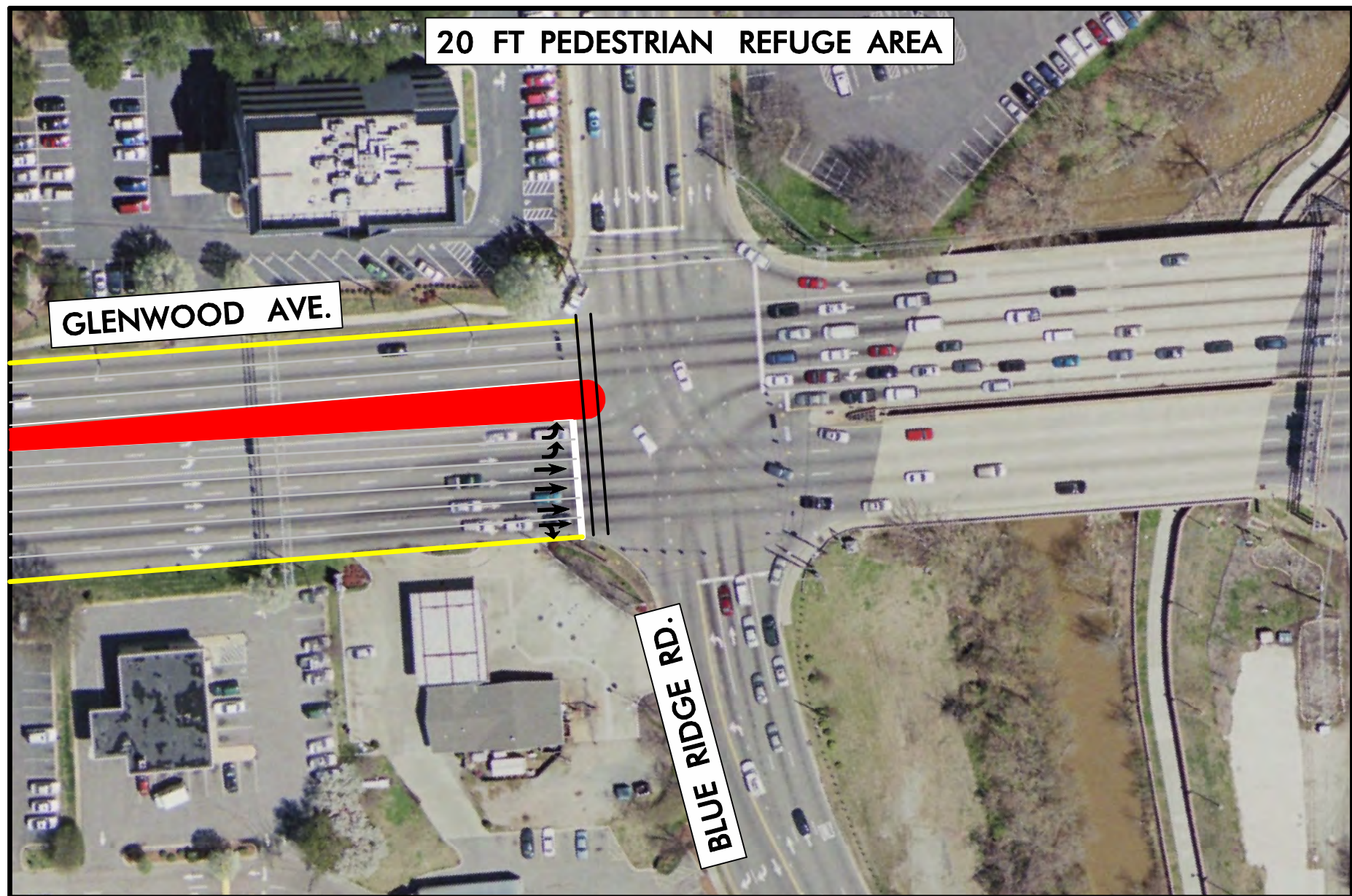
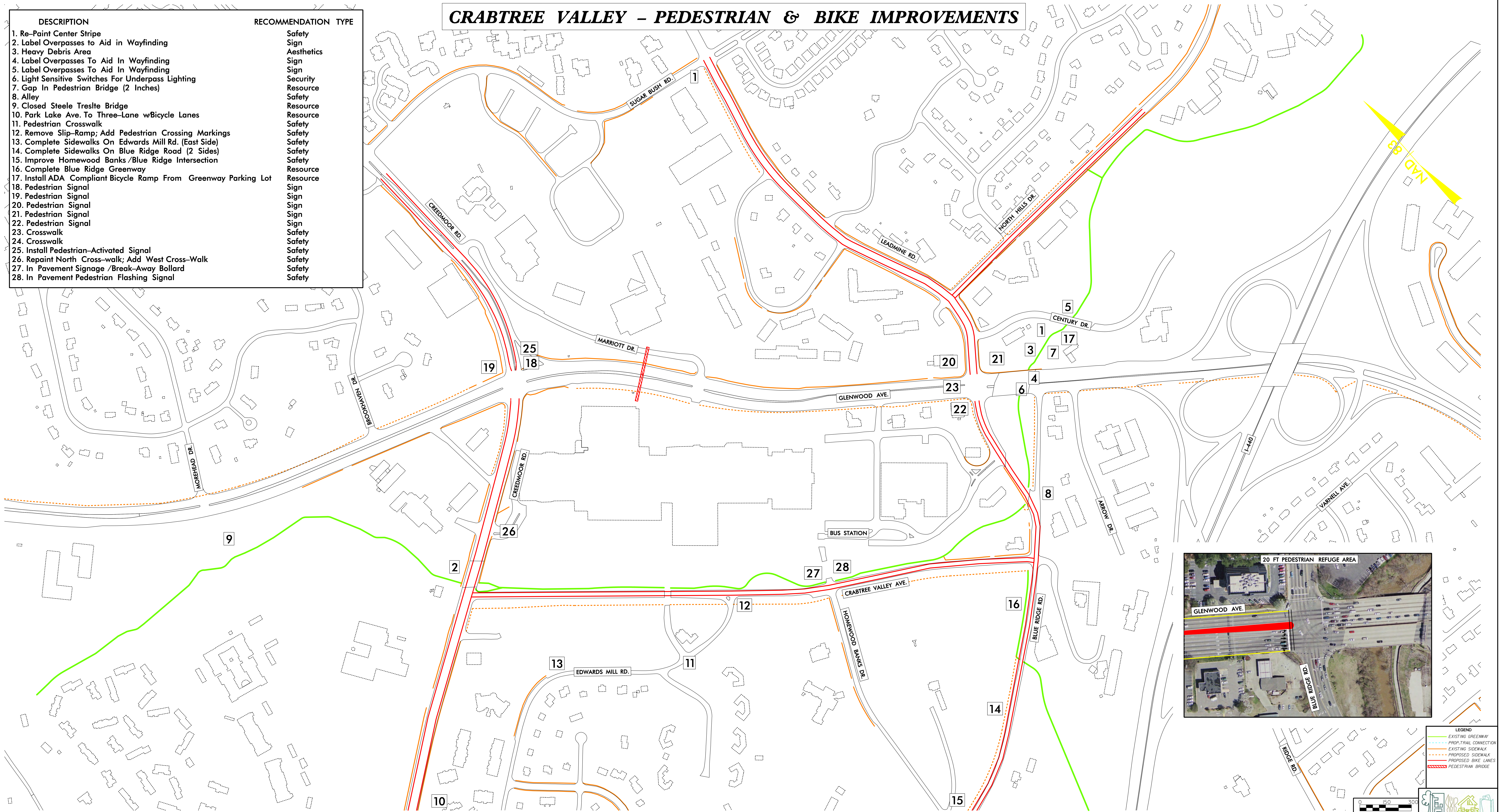
LOUIS BERGER GROUP
1001 West Avenue, Suite 400
Raleigh, North Carolina 27605

10

15

CRABTREE VALLEY – PEDESTRIAN & BIKE IMPROVEMENTS

DESCRIPTION	RECOMMENDATION	TYPE
1. Re-Paint Center Stripe	Safety	
2. Label Overpasses to Aid in Wayfinding	Sign	
3. Heavy Debris Area	Aesthetics	
4. Label Overpasses To Aid In Wayfinding	Sign	
5. Label Overpasses To Aid In Wayfinding	Sign	
6. Light Sensitive Switches For Underpass Lighting	Security	
7. Gap In Pedestrian Bridge (2 Inches)	Resource	
8. Alley	Safety	
9. Closed Steele Trestle Bridge	Resource	
10. Park Lake Ave. To Three-Lane w/Bicycle Lanes	Resource	
11. Pedestrian Crosswalk	Safety	
12. Remove Slip-Ramp; Add Pedestrian Crossing Markings	Safety	
13. Complete Sidewalks On Edwards Mill Rd. (East Side)	Safety	
14. Complete Sidewalks On Blue Ridge Road (2 Sides)	Safety	
15. Improve Homewood Banks /Blue Ridge Intersection	Safety	
16. Complete Blue Ridge Greenway	Resource	
17. Install ADA Compliant Bicycle Ramp From Greenway Parking Lot	Resource	
18. Pedestrian Signal	Sign	
19. Pedestrian Signal	Sign	
20. Pedestrian Signal	Sign	
21. Pedestrian Signal	Sign	
22. Pedestrian Signal	Sign	
23. Crosswalk	Safety	
24. Crosswalk	Safety	
25. Install Pedestrian-Activated Signal	Safety	
26. Repaint North Cross-walk; Add West Cross-Walk	Safety	
27. In Pavement Signage /Break-Away Bollard	Safety	
28. In Pavement Pedestrian Flashing Signal	Safety	



LEGEND

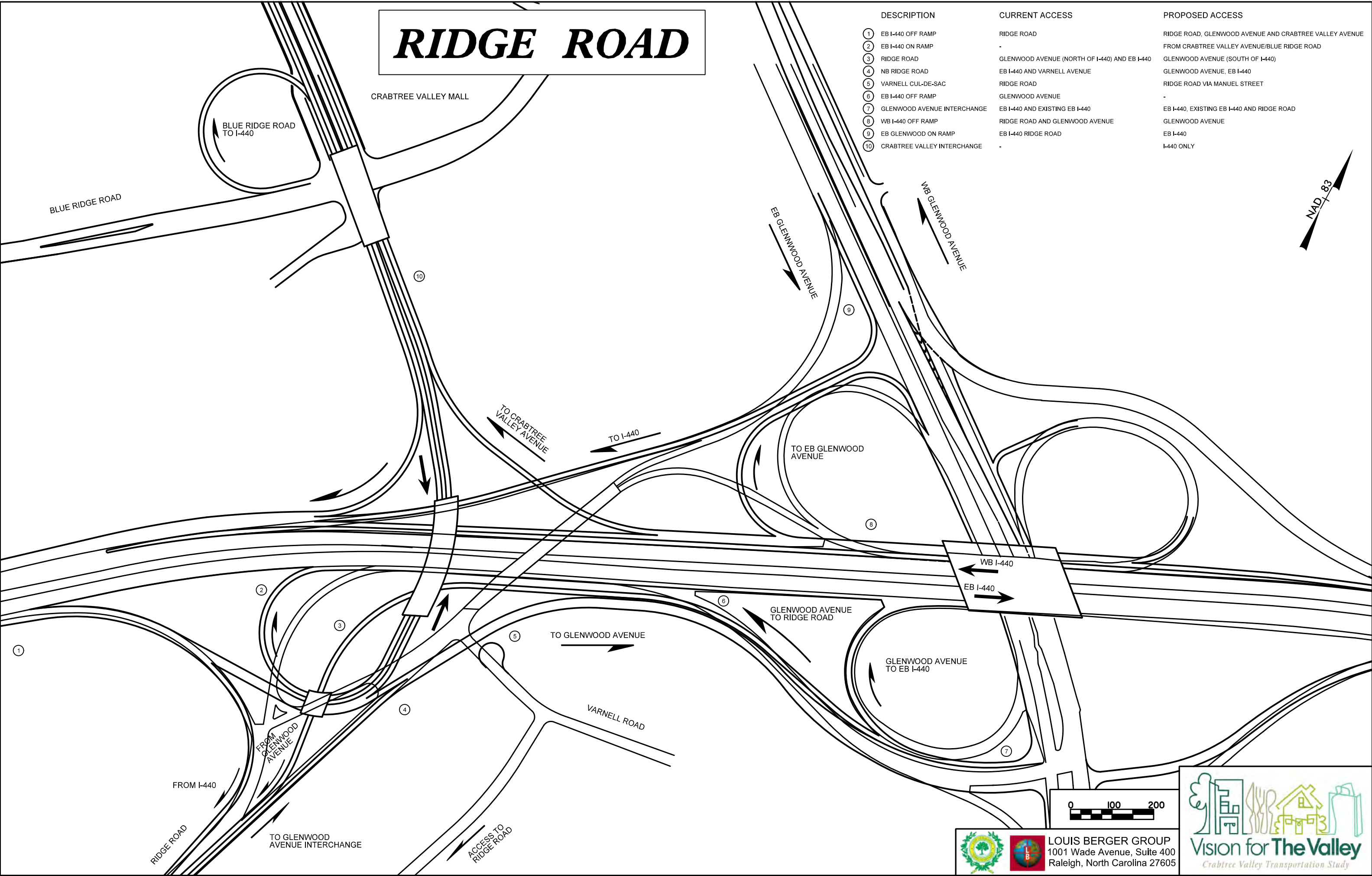
- EXISTING GREENWAY
- PROP. TRAIL CONNECTION
- EXISTING SIDEWALK
- PROPOSED SIDEWALK
- PROPOSED BIKE LANES
- PEDESTRIAN BRIDGE

0 150 300

LOUIS BERGER GROUP
1001 Wade Avenue, Suite 400
Raleigh, North Carolina 27605

Vision for The Valley
Crabtree Valley Transportation Study

RIDGE ROAD



DESCRIPTION	CURRENT ACCESS	PROPOSED ACCESS
① EB I-440 OFF RAMP	RIDGE ROAD	RIDGE ROAD, GLENWOOD AVENUE AND CRABTREE VALLEY AVENUE
② EB I-440 ON RAMP	-	FROM CRABTREE VALLEY AVENUE/BLUE RIDGE ROAD
③ RIDGE ROAD	GLENWOOD AVENUE (NORTH OF I-440) AND EB I-440	GLENWOOD AVENUE (SOUTH OF I-440)
④ NB RIDGE ROAD	EB I-440 AND VARNELL AVENUE	GLENWOOD AVENUE, EB I-440
⑤ VARNELL CUL-DE-SAC	RIDGE ROAD	RIDGE ROAD VIA MANUEL STREET
⑥ EB I-440 OFF RAMP	GLENWOOD AVENUE	-
⑦ GLENWOOD AVENUE INTERCHANGE	EB I-440 AND EXISTING EB I-440	EB I-440, EXISTING EB I-440 AND RIDGE ROAD
⑧ WB I-440 OFF RAMP	RIDGE ROAD AND GLENWOOD AVENUE	GLENWOOD AVENUE
⑨ EB GLENWOOD ON RAMP	EB I-440 RIDGE ROAD	EB I-440
⑩ CRABTREE VALLEY INTERCHANGE	-	I-440 ONLY



LOUIS BERGER GROUP
1001 Wade Avenue, Suite 400
Raleigh, North Carolina 27605

