

Helpful Hints for Navigation on Durant Nature Park Trails

- To use this map for navigation, find a trail or series of trails you wish to take and note the blaze color(s) found in the key. Use landmarks to find the trail head and follow the blaze color you chose.
- Maps have been placed on posts at major trail intersections with “you are here” arrows. Look carefully - they are oriented and may not be in an obvious location. Check your location on these maps or use them exclusively for navigation and help us reduce paper waste.

Attention Mountain Bikers

- The trails designated for mountain bike use are noted on the map. There is also signage on the trail.
- The ride forms a figure 8 and includes dirt road and single-track, some moderate terrain and some hills. Know your ability and ride in control.
- The trails where bikes are allowed were chosen for their ability to withstand tire wear and minimize impact to plants we value.
- Trails signed for mountain bikes are multiuse. Yield to walkers.
- Helmets are required.

Visit the office for ideas on which trails to take and what you might see along the way!

Happy Trails



Park Information

Park Hours: Open daily from 8AM to dusk.
Gates close at dusk. Please plan accordingly.

Office Hours: 8:30-2:30 M-F

Staff availability after this time and on Saturdays varies due to Park programs, projects, rentals and other needs.

Programs and Rentals: Visit the kiosks and office to learn about Durant Nature Park's many programs and rental opportunities.



Durant Nature Park Trail Map



8305 Camp Durant Rd
Raleigh NC 27614
919 870-2871

Trail Responsibilities

- Leave no trace.
- Protect wildlife and other park users. Dogs are required to be on leash at all times.
- Mutt-mitts are provided for cleaning up after your dog.
- Report problems to the office.

Fishing

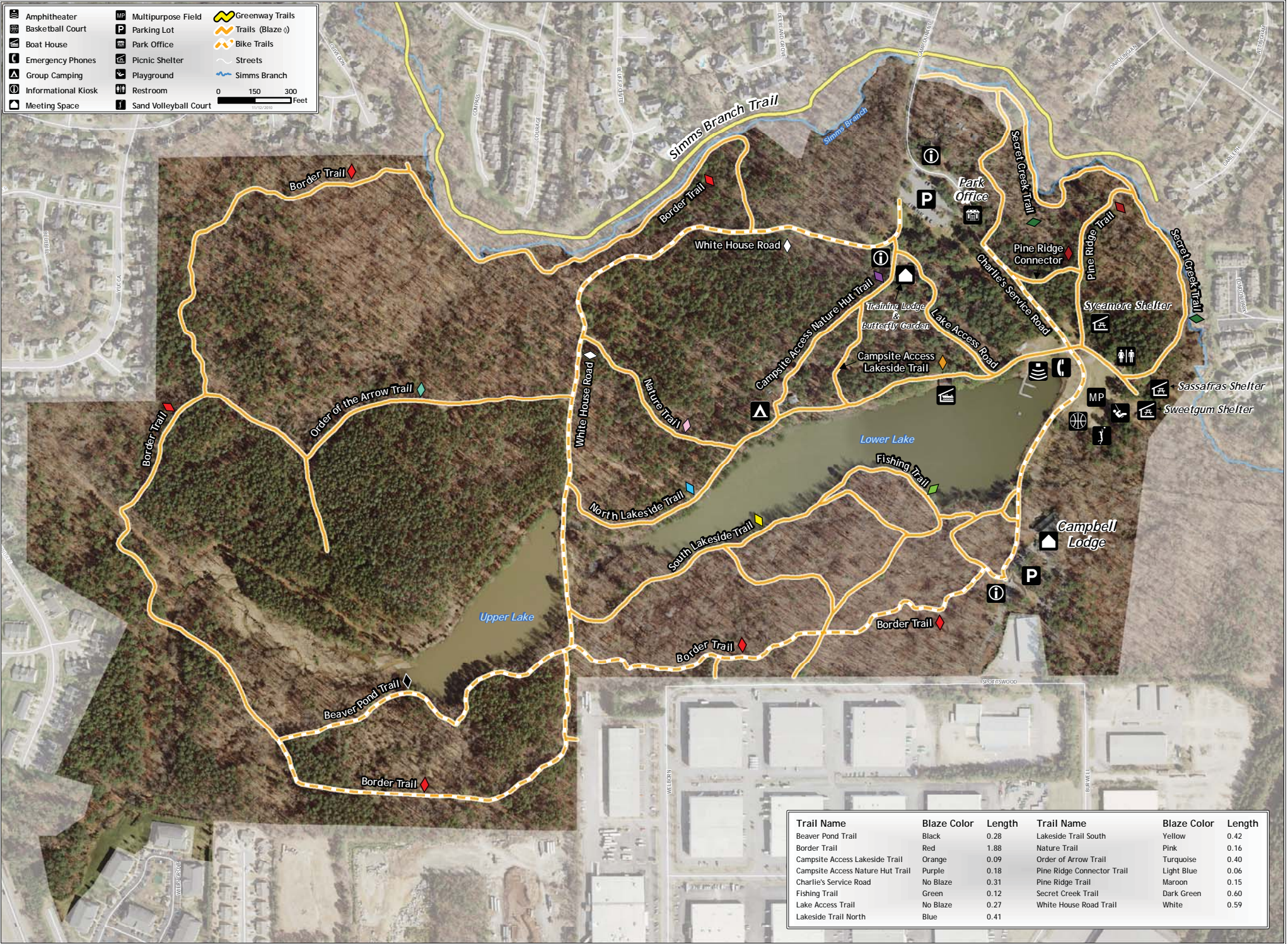
- Fishing is allowed anywhere except the swimming dock.
- NC fishing regulations apply.
- Protect wildlife, remove tangled fishing line or contact the office.

A paved trail accesses the lower lake, playfield and public restroom.

Durant Nature Park



0 150 300 Feet



Trail Name	Blaze Color	Length	Trail Name	Blaze Color	Length
Beaver Pond Trail	Black	0.28	Lakeside Trail South	Yellow	0.42
Border Trail	Red	1.88	Nature Trail	Pink	0.16
Campsite Access Lakeside Trail	Orange	0.09	Order of Arrow Trail	Turquoise	0.40
Campsite Access Nature Hut Trail	Purple	0.18	Pine Ridge Connector Trail	Light Blue	0.06
Charlie's Service Road	No Blaze	0.31	Pine Ridge Trail	Maroon	0.15
Fishing Trail	Green	0.12	Secret Creek Trail	Dark Green	0.60
Lake Access Trail	No Blaze	0.27	White House Road Trail	White	0.59
Lakeside Trail North	Blue	0.41			